

Relação do aço

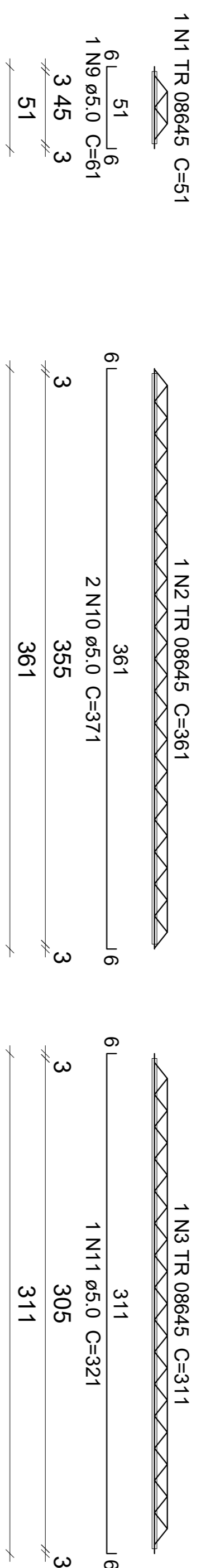
10xVT1a	10xVT2a	10xVT3a
10xVT4a	10xVT5a	10xVT6a
10xVT7a	2xVT8a	9xVT8b
10xVT9a		

AÇO	N	DIAM (mm)	QUANT	C.UNIT (cm)	C.TOTAL (cm)
CA50	1	TR 08645	10	51	510
	2	TR 08645	10	361	3610
	3	TR 08645	10	311	3110
	4	TR 08645	20	191	3820
	5	TR 08645	10	76	760
	6	TR 08645	10	396	3960
	7	TR 08645	11	431	4741
	8	TR 08645	10	137	1370
	9	5.0	10	61	610
	10	5.0	20	371	7420
	11	5.0	10	321	3210
	12	5.0	20	201	4020
	13	5.0	10	86	860
	14	5.0	29	441	12789
	15	5.0	10	147	1470
	16	6.3	20	407	8140

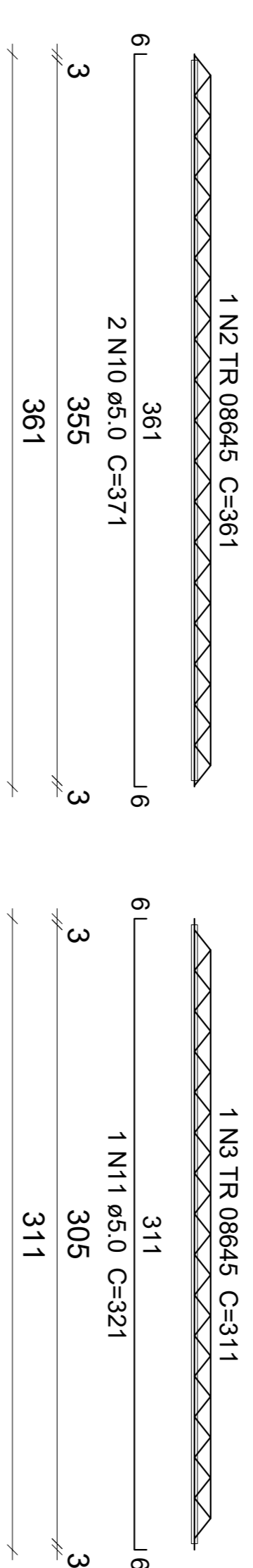
Resumo do aço

AÇO	DIAM (mm)	C.TOTAL (m)	QUANT + 10 % (Barras)	PESO + 10 % (kg)
CA50	6.3	81.4	8	21.9
CA60	TR 08645	218.9	-	197.8
	5.0	303.8	-	51.5
PESO TOTAL (kg)				
CA50				21.9
CA60				249.4

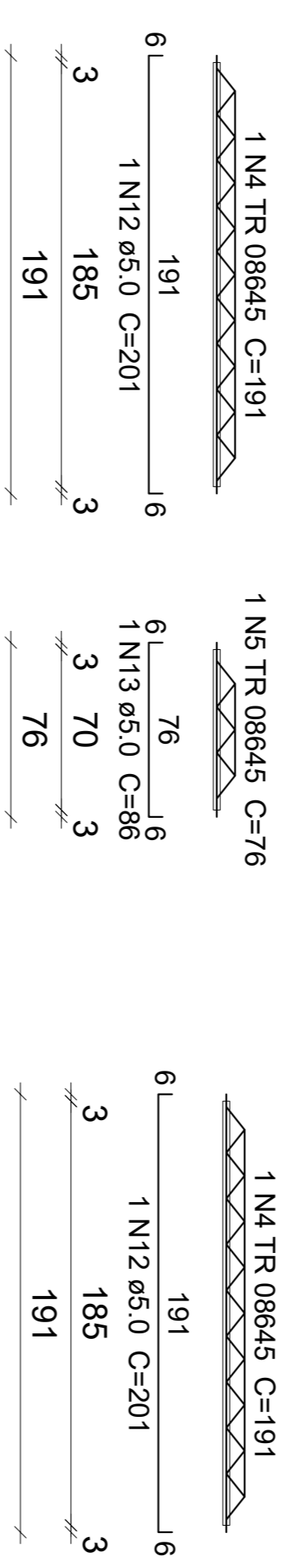
VT1a (10 unidades)
(R1)
ESC 1:50



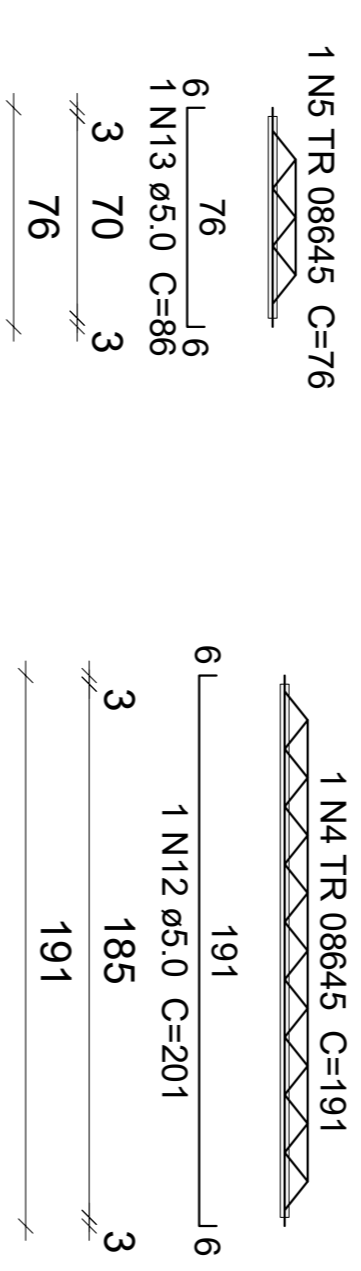
VT2a (10 unidades)
(R2)
ESC 1:50



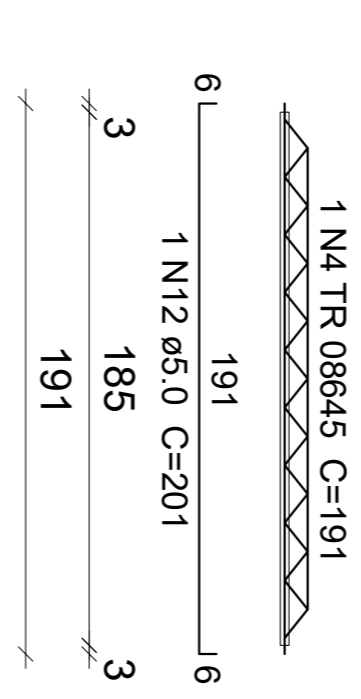
VT4a (10 unidades)
(R4)
ESC 1:50



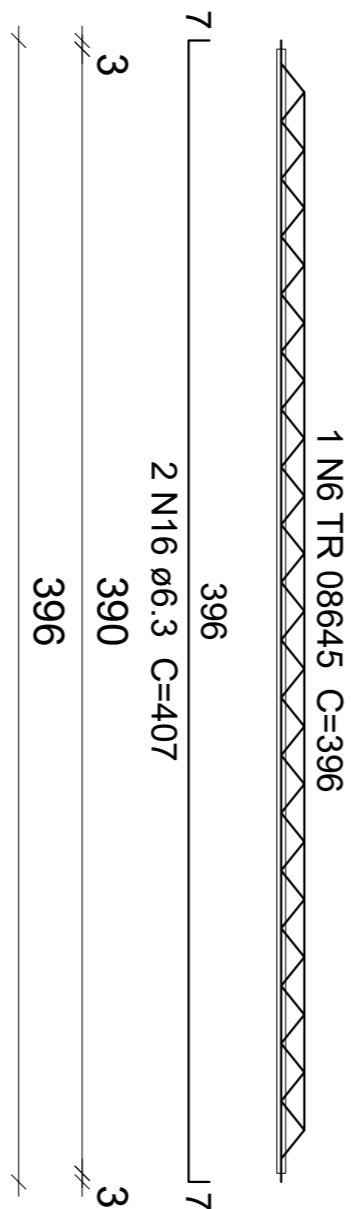
VT5a (10 unidades)
(R5)
ESC 1:50



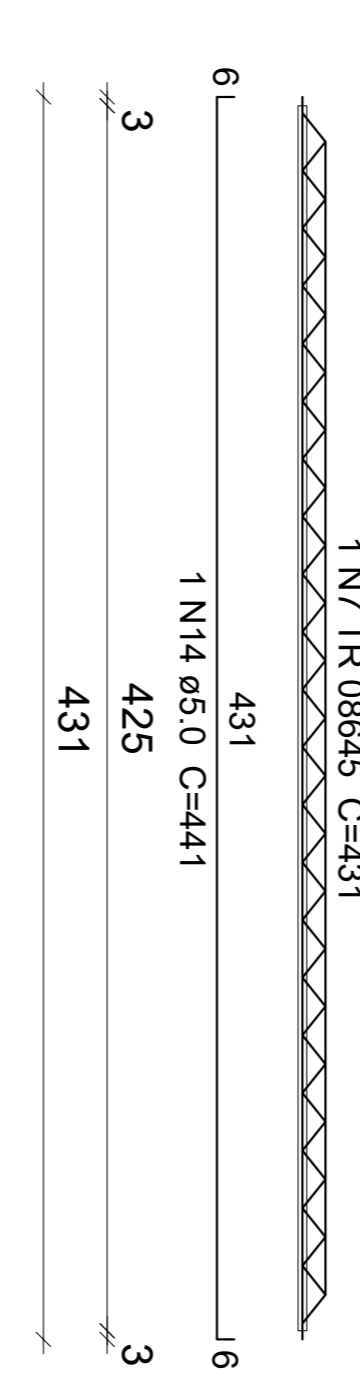
VT6a (10 unidades)
(R6)
ESC 1:50



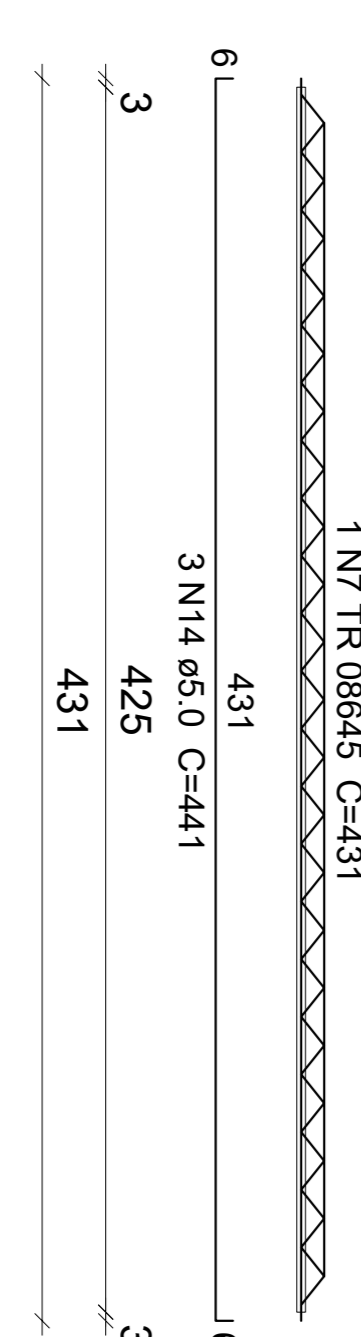
VT7a (10 unidades)
(R7)
ESC 1:50



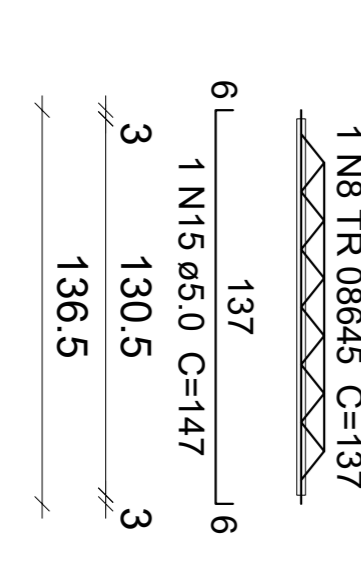
VT8a (2 unidades)
(R8)
ESC 1:50



VT8b (9 unidades)
(R8)
ESC 1:50



VT9a (10 unidades)
(R9)
ESC 1:50



FOLHA		PROJETO ESTRUTURAL DO CREA -PB EM ITAPORANGA	
		PROPRIETÁRIO CREA - PB	
01/01		LOCAL R. -PB JOÃO SILVINO DA FONSECA, Q. 16, LT. 04 - ITAPORANGA	
ESCALA		PROJETISTA	
1/50		ENGENHEIRO Geraldo Ribeiro da Silva CREA 328D	
		VIGOTAS PAV. EMPENA	