

Relação do aço

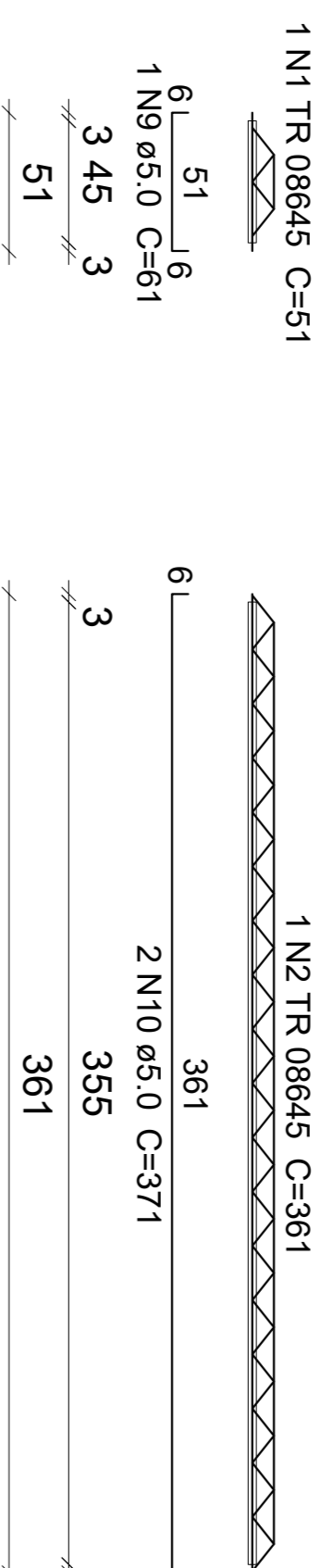
5xVT1a 5xVT2a 5xVT3a
 5xVT4a 5xVT5a 9xVT6a
 11xVT7a 5xVT8a

AÇO	N	DIAM (mm)	QUANT	C.UNIT (cm)	C.TOTAL (cm)
CA60	1	TR 08645	5	51	255
	2	TR 08645	5	361	1805
	3	TR 08645	5	311	1555
	4	TR 08645	5	191	955
	5	TR 08645	5	266	1330
	6	TR 08645	9	232	2088
	7	TR 08645	11	242	2662
	8	TR 08645	5	136	680
	9	5.0	5	61	305
	10	5.0	10	371	3710
	11	5.0	5	321	1605
	12	5.0	5	201	1005
	13	5.0	5	276	1380
	14	5.0	9	242	2178
	15	5.0	11	252	2772
	16	5.0	5	146	730

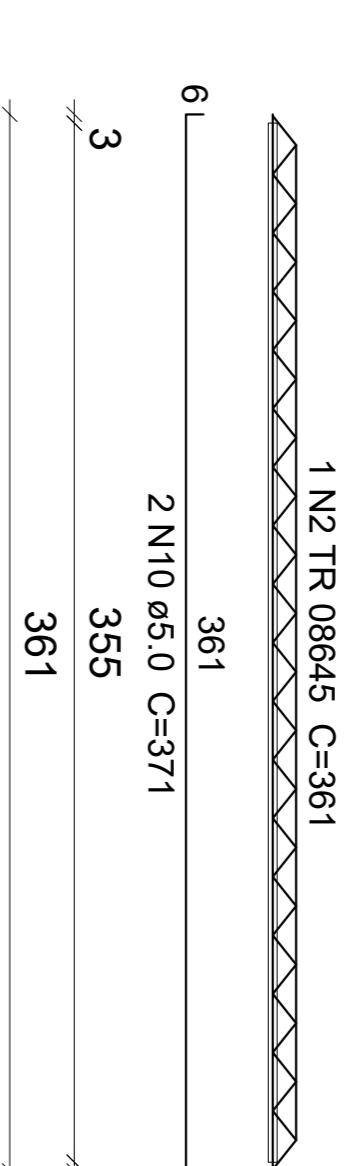
Resumo do aço

AÇO	DIAM (mm)	C.TOTAL (m)	QUANT + 10 % (Barras)	PESO + 10 % (kg)
CA60	TR 08645	113.3	-	102.4
	5.0	136.9	-	23.2
PESO TOTAL (kg)				125.6
CA60				125.6

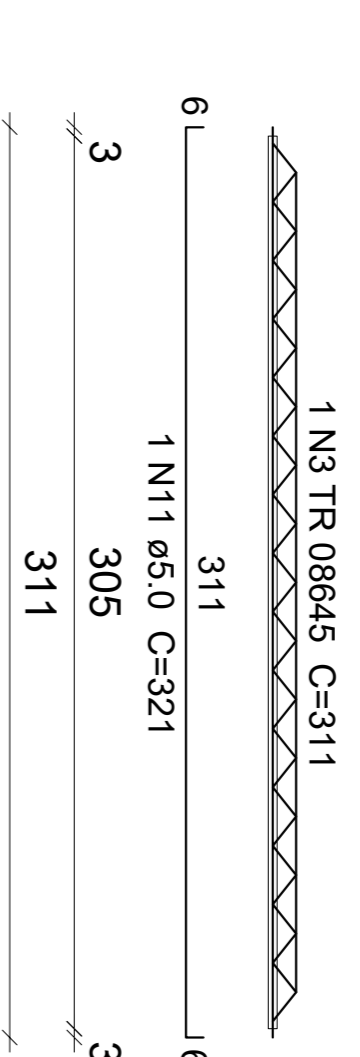
VT1a (5 unidades) (R1)
 ESC 1:50



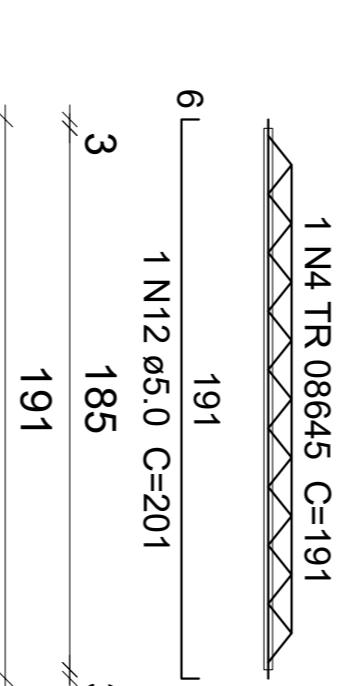
VT2a (5 unidades) (R2)
 ESC 1:50



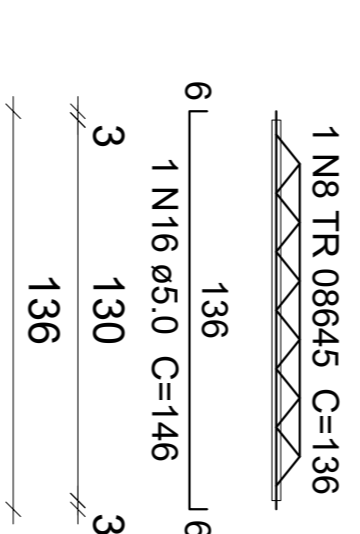
VT3a (5 unidades) (R3)
 ESC 1:50



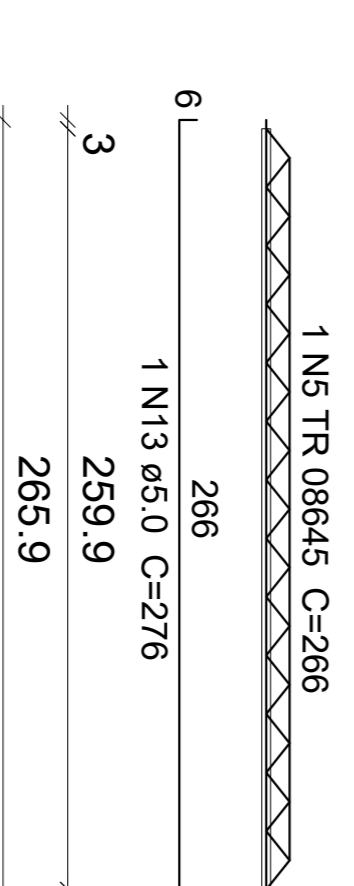
VT4a (5 unidades) (R4)
 ESC 1:50



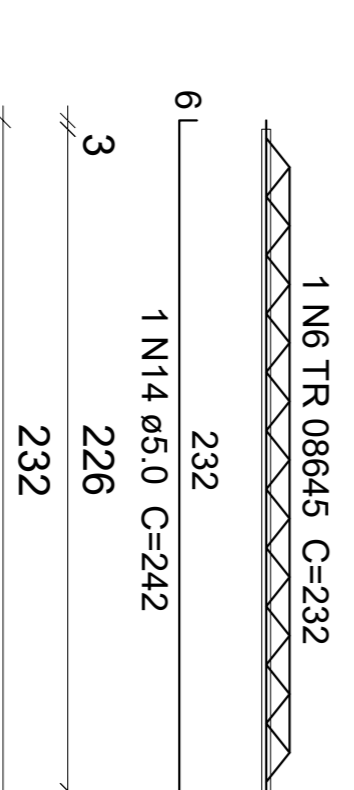
VT8a (5 unidades) (R8)
 ESC 1:50



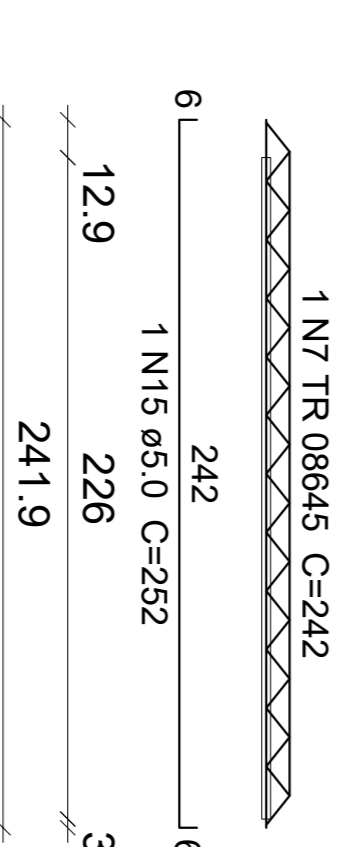
VT5a (5 unidades) (R5)
 ESC 1:50



VT6a (9 unidades) (R6)
 ESC 1:50



VT7a (11 unidades) (R7)
 ESC 1:50



FOLHA

01/01

PROJETO ESTRUTURAL DO CREA -PB EM ITAPORANGA
 PROPRIETÁRIO CREA - PB

LOCAL R. -PB JOÃO SILVINO DA FONSECA, Q. 16, LT. 04 - ITAPORANGA

PROJETISTA

ENGENHEIRO
 Geraldo Ribeiro da Silva
 CREA 328D

ESCALA

1/50

VIGOTAS PAV. EMPENA1