

Relação do aço

2xVT1a 7xVT2a 7xVT3a  
 7xVT4a 8xVT5a 5xVT6a  
 VT7a 9xVT8a 7xVT9a  
 3xVT10a

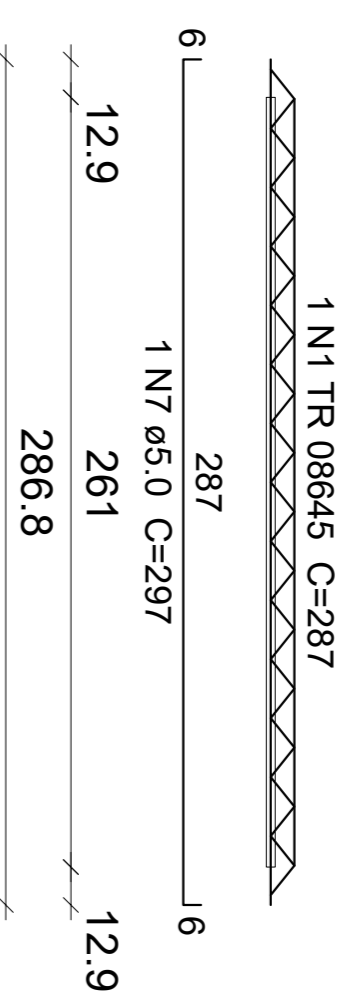
AÇO	N	DIAM (mm)	QUANT	C:UNIT (cm)	C:TOTAL (cm)
CA60	1	TR 08645	2	287	574
	2	TR 08645	7	217	1519
	3	TR 08645	14	251	3514
	4	TR 08645	8	100	800
	5	TR 08645	5	372	1860
	6	TR 08645	20	161	3220
	7	5.0	2	297	594
	8	5.0	7	227	1589
	9	5.0	14	261	3654
	10	5.0	8	110	880
	11	5.0	10	382	3820
	12	5.0	20	171	3420

Resumo do aço

AÇO	DIAM (mm)	C:TOTAL (m)	QUANT + 10 % (Barras)	PESO + 10 % (kg)
CA60	TR 08645	114.9	-	103.9
	5.0	139.6	-	23.7
<b>PESO TOTAL (kg)</b>				<b>127.5</b>

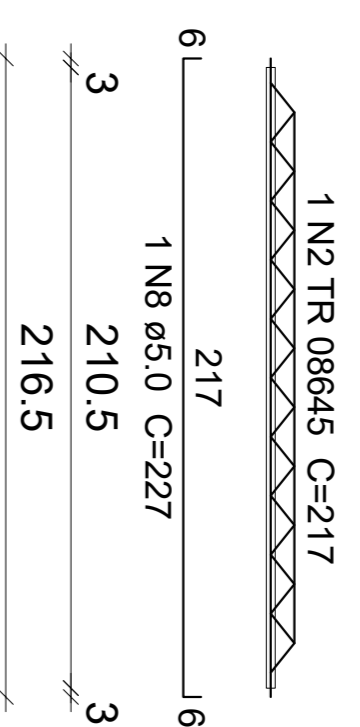
VT1a (2 unidades)

(R1)  
ESC 1:50



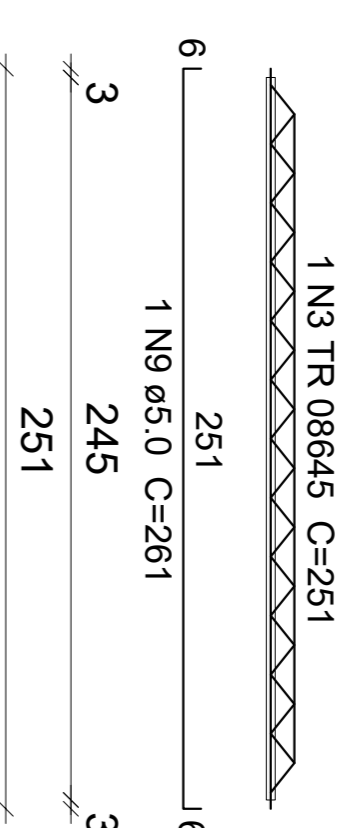
VT2a (7 unidades)

(R2)  
ESC 1:50



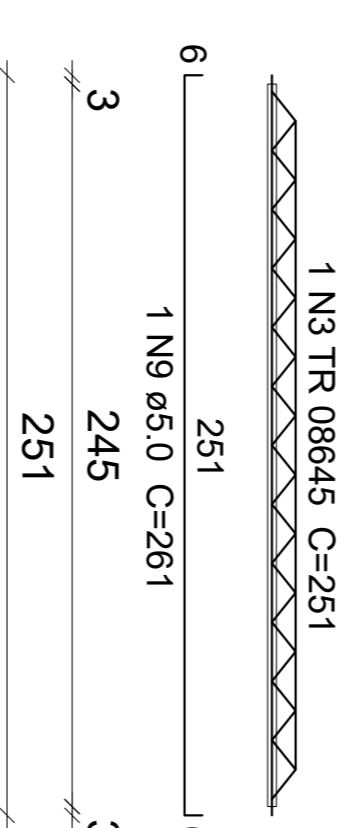
VT3a (7 unidades)

(R3)  
ESC 1:50



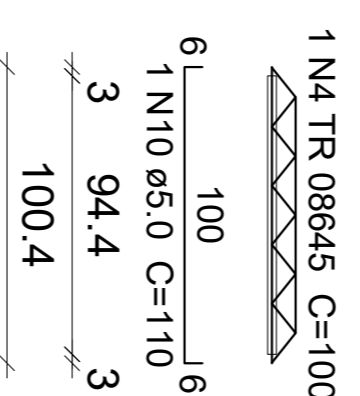
VT4a (7 unidades)

(R4)  
ESC 1:50



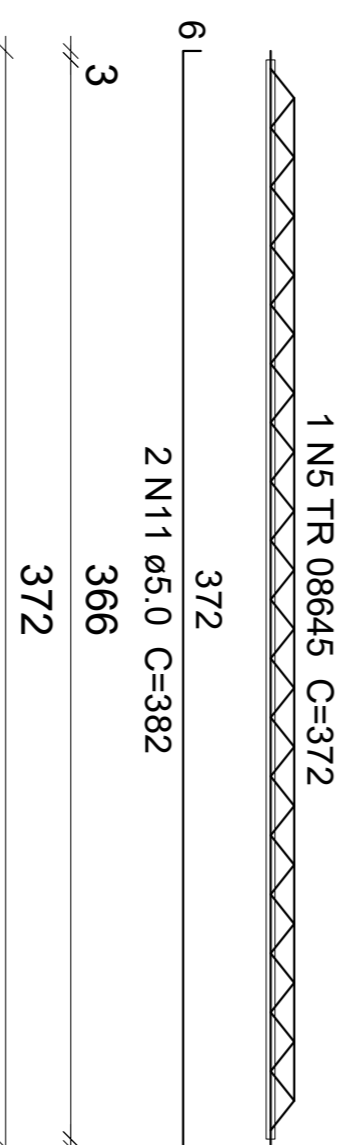
VT5a (8 unidades)

(R5)  
ESC 1:50



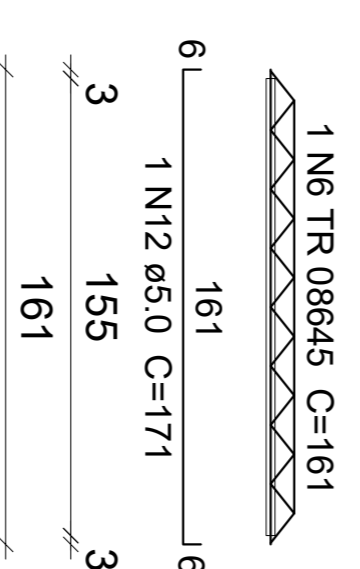
VT6a (5 unidades)

(R6)  
ESC 1:50



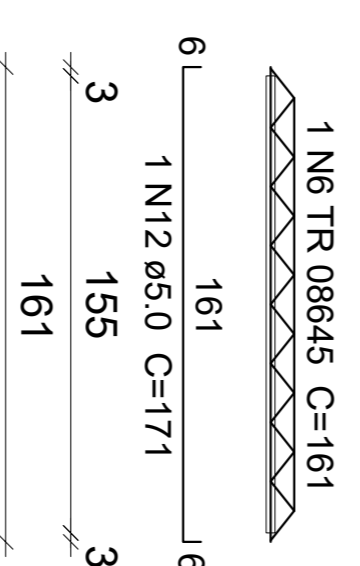
VT7a (1 unidades)

(R7)  
ESC 1:50



VT8a (9 unidades)

(R8)  
ESC 1:50



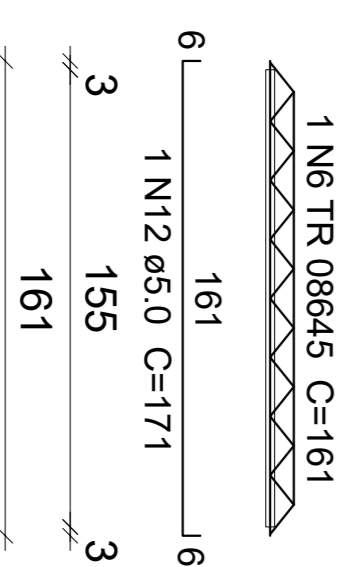
VT9a (7 unidades)

(R9)  
ESC 1:50



VT10a (3 unidades)

(R10)  
ESC 1:50



FOLHA

01/01

PROJETO ESTRUTURAL DO CREA -PB EM ITAPORANGA  
 PROPRIETÁRIO CREA - PB  
 LOCAL R. JOÃO SILVINO DA FONSECA, Q. 16, LT. 04 - ITAPORANGA -PB

PROJETISTA

ENGENHEIRO  
 Geraldo Ribeiro da Silva  
 CREA 328D

ESCALA

1/50

VIGOTAS FUNDO RS

VIGOTAS